



Two-factor authentication quick setup guide

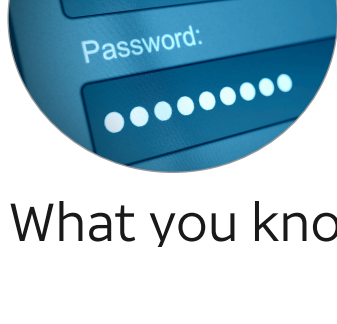
AT&T Wi-Fi has rolled out two-factor authentication because the security of your data is important to us. This is a quick guide explaining how to connect Salesforce Authenticator to your AT&T Wi-Fi Customer account to more easily and with high security log in to the AT&T Wi-Fi Customer Portal.

1 What is two factor authentication (2FA)?



What you have

+



What you know

2 Why is 2FA important?

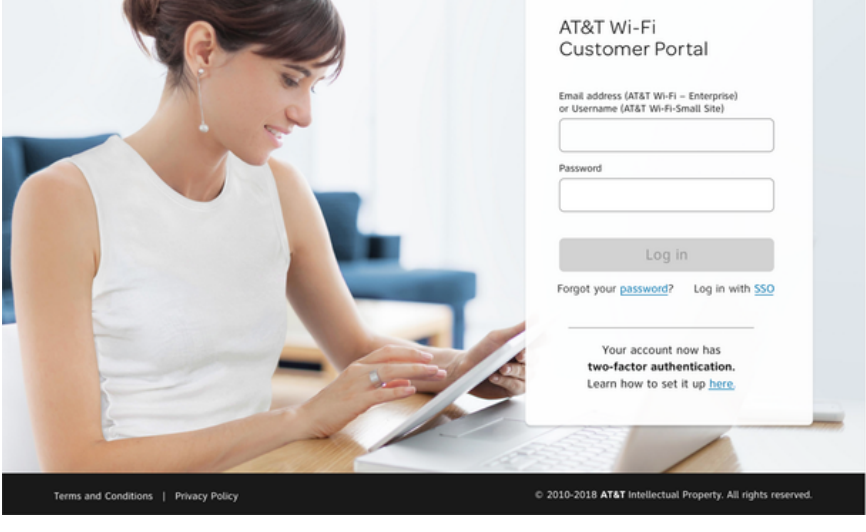
- Provides additional layer of security beyond login/password.
- Payment Card Industry (PCI) & HIPAA compliance.

3 Who is impacted by 2FA enablement on the portal?

- Users with write access to the AT&T Wi-Fi Customer Portal.

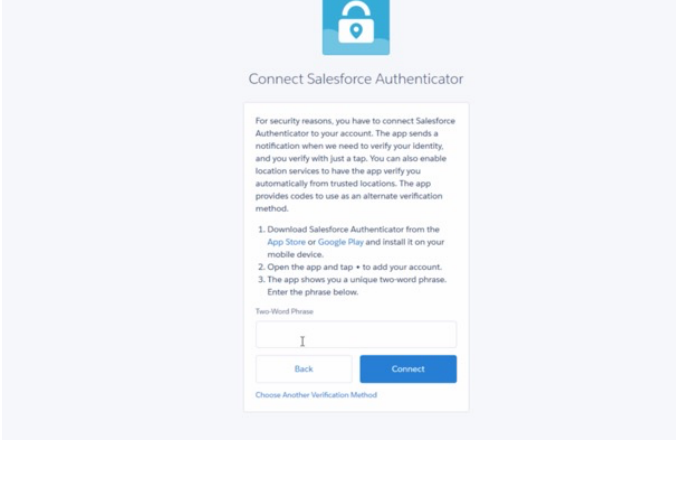
4 Follow the instructions below to set it up.

Log in to the portal



Go to <https://mywifi.attwifi.com> and log in to the AT&T Wi-Fi Customer Portal as usual.

Salesforce instructions screen

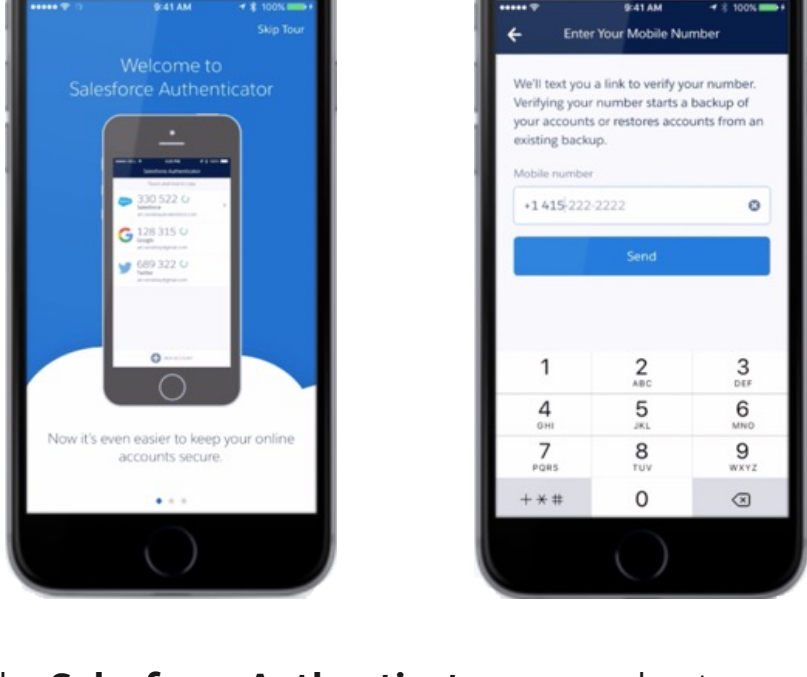


The browser will take you to a Salesforce page that says “**Connect Salesforce Authenticator**”, and it will contain instructions about how to **download** the **Salesforce Authenticator** app to your mobile device.

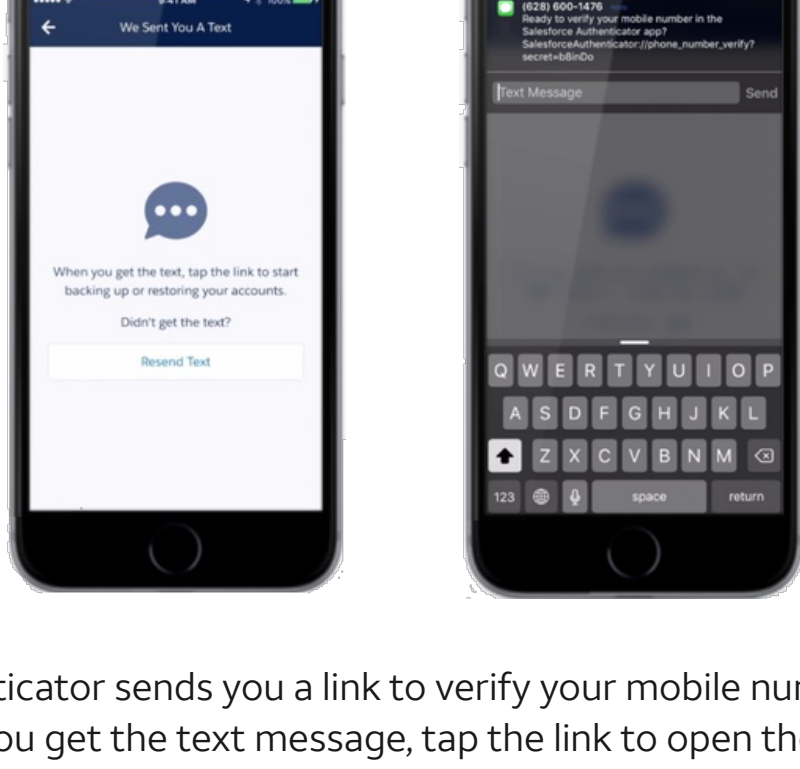
Once you install that app, the app will show you a unique two-word phrase that you will enter into this screen.

Install and configure the app

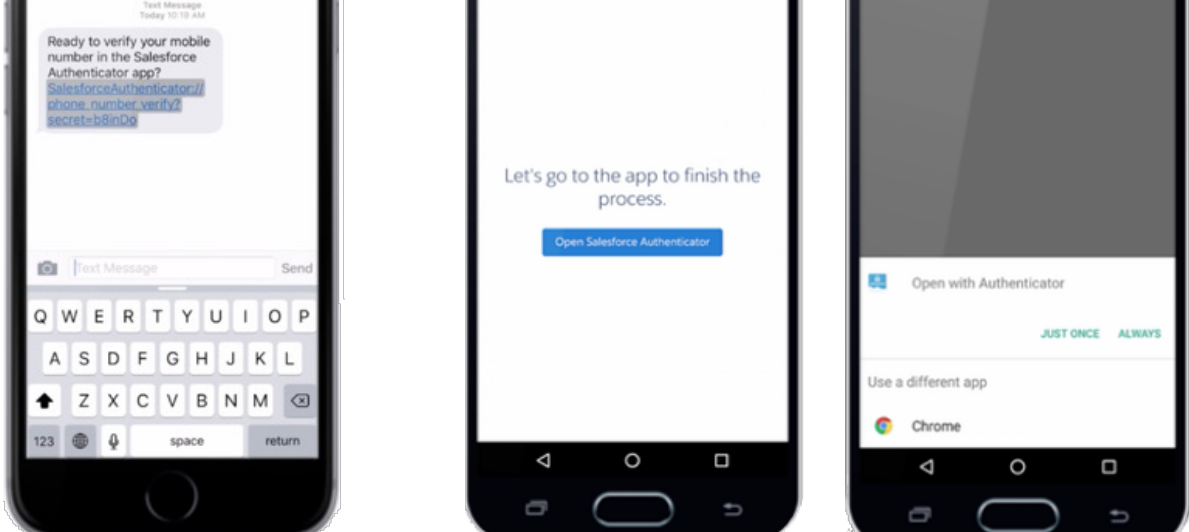
Download the **Salesforce Authenticator** app for free from **Google Play** or the **App Store**.



Open the **Salesforce Authenticator** app and enter your mobile number to create a backup of your accounts.



Authenticator sends you a link to verify your mobile number. When you get the text message, tap the link to open the Authenticator app.

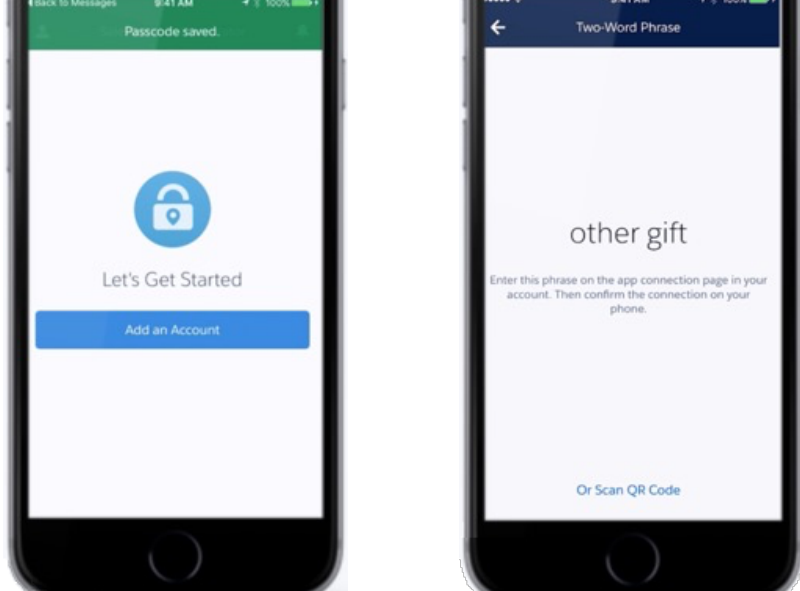


If you use an iOS device, you'll be asked for permission to open the Authenticator app. On Android devices, you'll either tap the Authenticator app from the list of apps to open or tap the Open **Salesforce Authenticator** button from your browser. Click link to open the app.

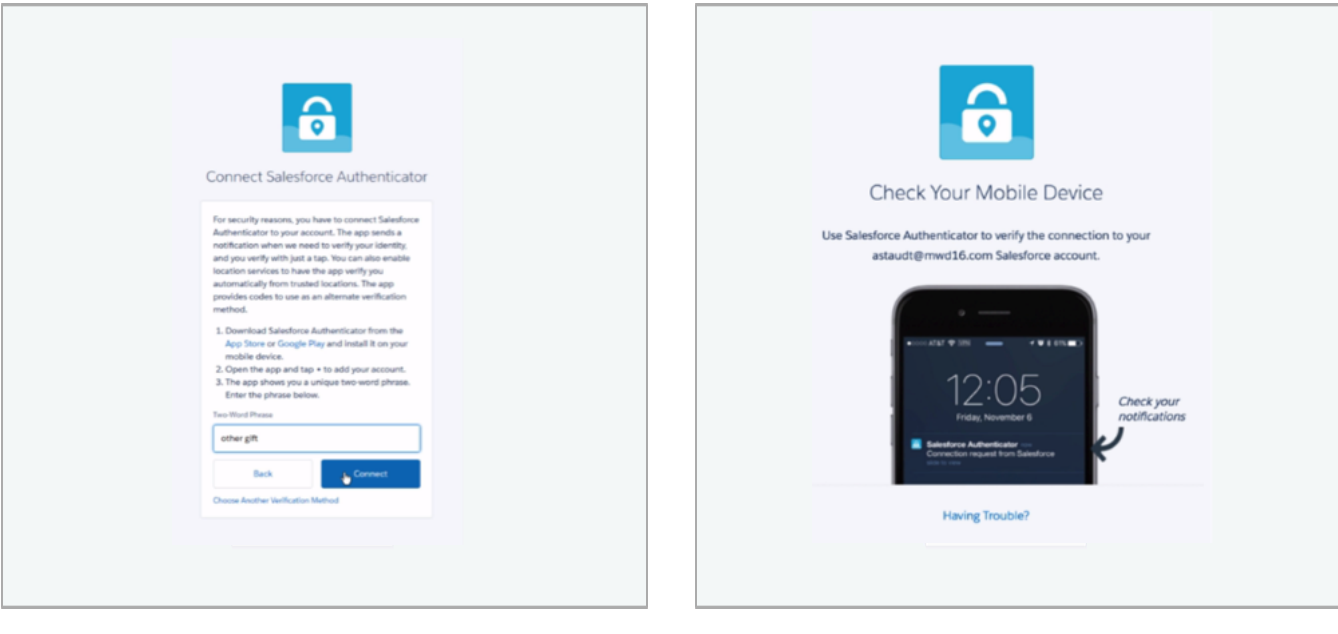


Set a passcode to protect your account backups in case you need to restore your account.

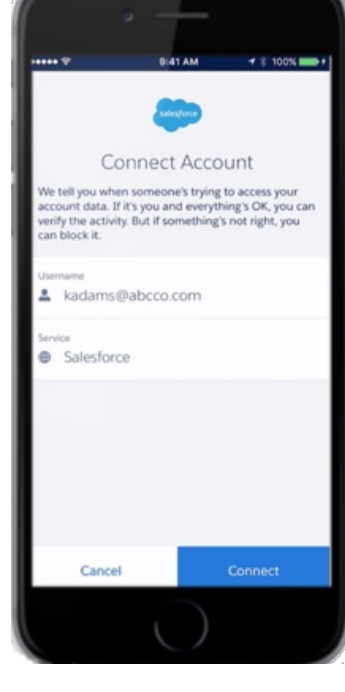
Connect Salesforce Authenticator



Now you are ready to add a Portal account. Tap “**Add an Account**.” You will see a two word phrase on the Authenticator app.



Type this phrase into the browser and click **Connect**. The browser will prompt you to check your phone.

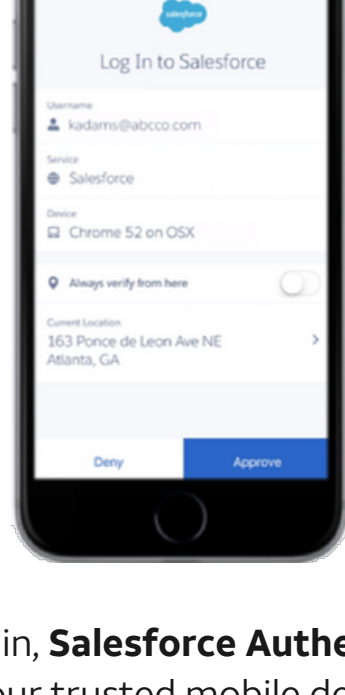


Verify that the pre-populated email address and service are correct, then tap the **Connect** button.

Your account is connected!



Congratulations! Your account is successfully paired with the Salesforce Authenticator app.



The next time you log in, **Salesforce Authenticator** will send you a push notification to your trusted mobile device. Tap **Approve** to log in.